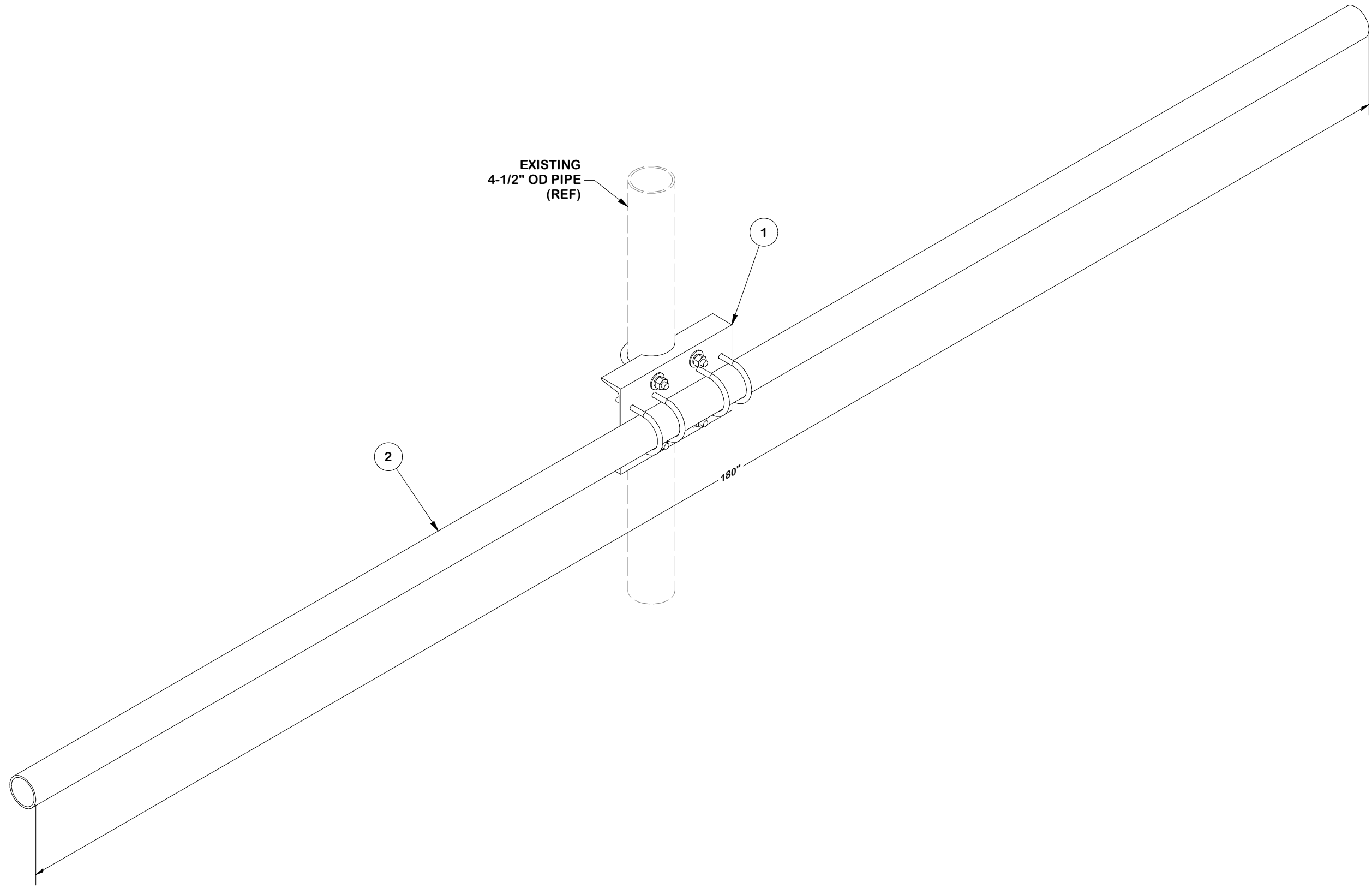


| PARTS LIST | | | | | | | | | | |
|------------|-----|----------|---------|--|--|--|--|-------------|----------|---------|
| ITEM | QTY | PART NO. | BOX NO. | PART DESCRIPTION | | | | LENGTH | UNIT WT. | NET WT. |
| 1 | 1 | SP216 | P-SP216 | LARGE PIPE SUPPORT CROSS PLATE | | | | | 30.46 | 30.46 |
| 2 | 1 | P3180 | | 3-1/2" X 174" SCH 40 GALVANIZED PIPE (A53 Gr.B Fy=35 ksi min.) | | | | 180 in | 113.76 | 113.76 |
| | | | | | | | | TOTAL WT. # | 140.43 | |



EXISTING
4-1/2" OD PIPE
(REF)

1

2

180"

FINISH:
HOT DIP GALVANIZED.

TOLERANCE NOTES
 TOLERANCES ON DIMENSIONS, UNLESS OTHERWISE NOTED ARE:
 SAWED, SHEARED AND GAS CUT EDGES ($\pm 0.030"$)
 DRILLED AND GAS CUT HOLES ($\pm 0.030"$) - NO CONING OF HOLES
 LASER CUT EDGES AND HOLES ($\pm 0.010"$) - NO CONING OF HOLES
 BENDS AND ANGLES ARE $\pm 1/2$ DEGREE
 ALL OTHER MACHINING ($\pm 0.030"$)
 ALL OTHER ASSEMBLY ($\pm 0.060"$)

DESCRIPTION
CELLULAR PIPE FRAME

SITE PRO 1
 A valmont COMPANY
 Engineering Support Team:
 sp1engineering@valmont.com

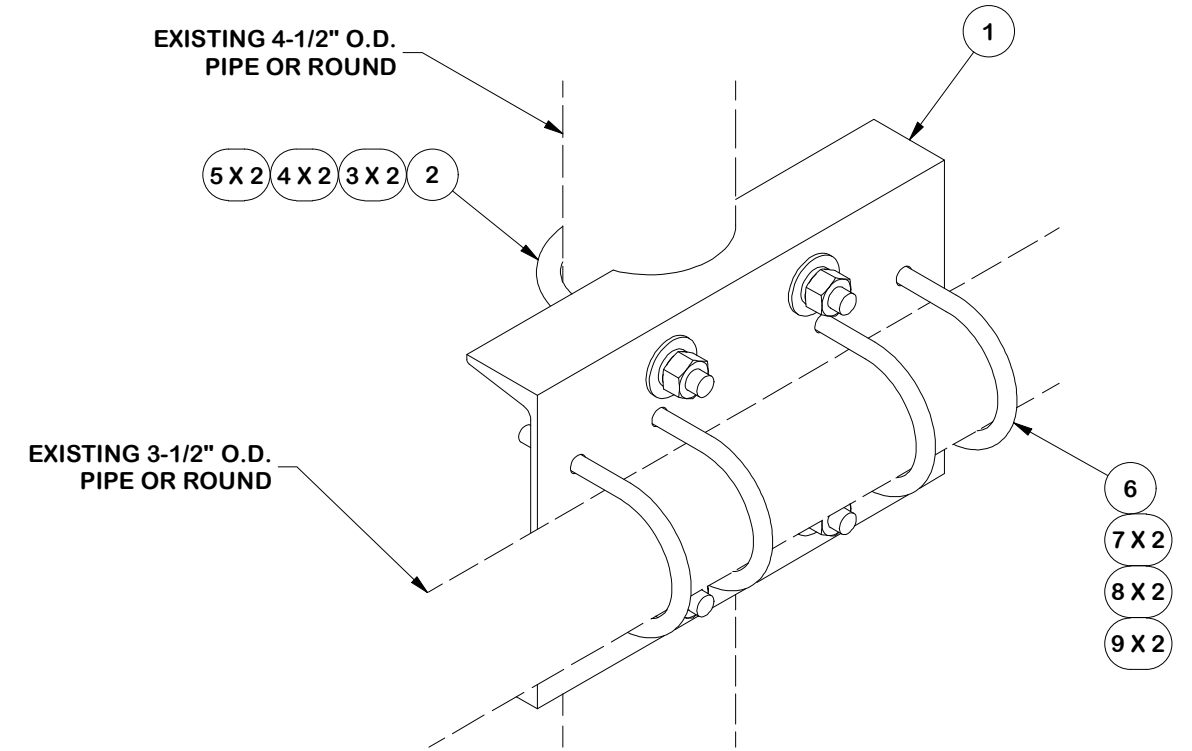
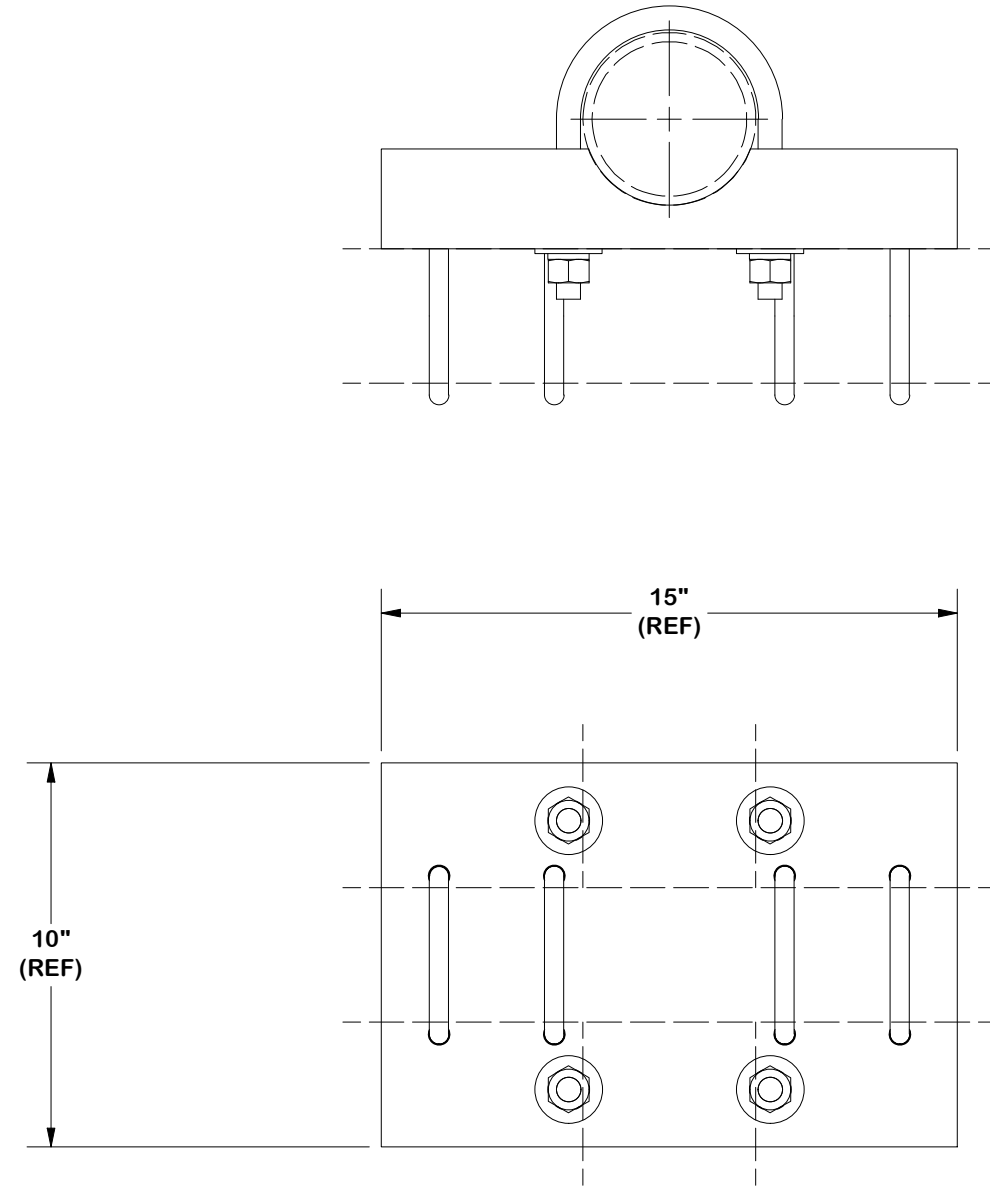
| REV | DESCRIPTION OF REVISIONS | CPD | BY | DATE |
|-----|---|-----|----|------------|
| A | REVISED PIPE LENGTH AND MADE SUPER ASSEMBLY | SP1 | KS | 12/16/2025 |

PATENT INFORMATION: WWW.SITEPRO1.COM/PATENTS
 PROPRIETARY NOTE:
 THE DATA AND TECHNIQUES CONTAINED IN THIS DRAWING ARE PROPRIETARY INFORMATION OF VALMONT INDUSTRIES AND CONSIDERED A TRADE SECRET. ANY USE OR DISCLOSURE WITHOUT THE CONSENT OF VALMONT INDUSTRIES IS STRICTLY PROHIBITED.

| | | |
|-------------------------------------|---------------------------------|------------------------------------|
| CPD NO. SP1 | DRAWN BY KC8 8/7/2012 | ENG. APPROVAL 12/30/2025 |
| CLASS 87 | SUB 02 | DRAWING USAGE CUSTOMER |
| CHECKED BY BMC 12/30/2025 | | |

| | |
|--------------------------------|-----------------------|
| PART NO. SP216-14-NS | PAGE 1 OF 2 |
| DWG. NO. SP216-14-NS | |

| PARTS LIST | | | | | | |
|-------------|-----|----------|------------------------------------|----------|----------|---------|
| ITEM | QTY | PART NO. | PART DESCRIPTION | LENGTH | UNIT WT. | NET WT. |
| 1 | 1 | X-SP216 | LARGE SUPPORT CROSS PLATE | | 22.08 | 22.08 |
| 2 | 2 | X-UB5458 | 5/8 X 4-5/8" X 7" X 3" U-BOLT | 7 in | 1.63 | 3.25 |
| 3 | 4 | G58FW | 5/8" HDG USS FLATWASHER | 1/8 in | 0.07 | 0.28 |
| 4 | 4 | G58LW | 5/8" HDG LOCKWASHER | | 0.03 | 0.10 |
| 5 | 4 | G58NUT | 5/8" HDG HEAVY 2H HEX NUT | | 0.13 | 0.52 |
| 6 | 4 | X-UB1358 | 1/2" X 3-5/8" X 5-1/2" X 3" U-BOLT | 5 1/2 in | 0.82 | 3.27 |
| 7 | 8 | G12FW | 1/2" HDG USS FLATWASHER | 3/32 in | 0.03 | 0.27 |
| 8 | 8 | G12LW | 1/2" HDG LOCKWASHER | 1/8 in | 0.01 | 0.11 |
| 9 | 8 | G12NUT | 1/2" HDG HEAVY 2H HEX NUT | 7/8 in | 0.07 | 0.57 |
| TOTAL WT. # | | | | | | 28.84 |



| REV | DESCRIPTION OF REVISIONS | CPD | BY | DATE |
|-----|---------------------------------------|-----|-----|-----------|
| A | REDRAWN IN INV, UPDATED VIEWS & TABLE | | KC8 | 8/17/2012 |


TOLERANCE NOTES

TOLERANCES ON DIMENSIONS, UNLESS OTHERWISE NOTED ARE:
 SAWED, SHEARED AND GAS CUT EDGES ($\pm 0.030"$)
 DRILLED AND GAS CUT HOLES ($\pm 0.030"$) - NO CONING OF HOLES
 LASER CUT EDGES AND HOLES ($\pm 0.010"$) - NO CONING OF HOLES
 BENDS AND ANGLES ARE $\pm 1/2$ DEGREE
 ALL OTHER MACHINING ($\pm 0.030"$)
 ALL OTHER ASSEMBLY ($\pm 0.060"$)

PATENT INFORMATION: WWW.SITEPRO1.COM/PATENTS

PROPRIETARY NOTE:
 THE DATA AND TECHNIQUES CONTAINED IN THIS DRAWING ARE PROPRIETARY INFORMATION OF VALMONT INDUSTRIES AND CONSIDERED A TRADE SECRET. ANY USE OR DISCLOSURE WITHOUT THE CONSENT OF VALMONT INDUSTRIES IS STRICTLY PROHIBITED.

| DESCRIPTION | | | |
|---------------------|--------------|---------------|----------------|
| CELLULAR PIPE FRAME | | | |
| CPD NO. | DRAWN BY | ENG. APPROVAL | |
| SP1 | KC8 8/7/2012 | 12/30/2025 | |
| CLASS | SUB | DRAWING USAGE | CHECKED BY |
| 87 | 02 | CUSTOMER | BMC 12/30/2025 |



A valmont COMPANY

Engineering Support Team:
sp1engineering@valmont.com

| | |
|----------|--------------------|
| PART NO. | SP216 |
| DWG. NO. | SP216-14-NS |